

# Match it

30  
mins



## Activity guide:

### Equipment required:

- Card packs printing out
- Answer sheet printouts

### **Before the activity:**

1. Print out the 3 pages that contain the game cards; they are labelled R\_IS\_1.

### **The activity:**

1. Split class into small groups
2. Each group gets a pack of cards with 5 species, 5 effects and 5 locations
3. They work as a group to match the species, locations and effects and fill these out on their answer sheets
4. The game can be extended by putting the packs in order of distance travelled, most likely to affect the local area or talking about how they think each species was introduced - these answers could be done as a discussion with the whole class.

### Answers - Match it game:

Geographical references in the species names were removed for game play. Their full names are shown below:

- Mitten crab (Chinese mitten crab)
- Destabilises river banks by creating burrows
- China
  
- Rhododendron ponticum
- Toxic leaves make area uninhabitable for other species
- Bulgaria, Turkey, Spain, Portugal
  
- Himalayan balsam
- Out-competes native species for space, light and water
- India and Nepal
  
- Carpet sea squirt
- Spreads very rapidly smothering all other species
- Scientists are unsure of origin
  
- Mink (American mink)
- Eats bird eggs, young birds and other small animals
- USA



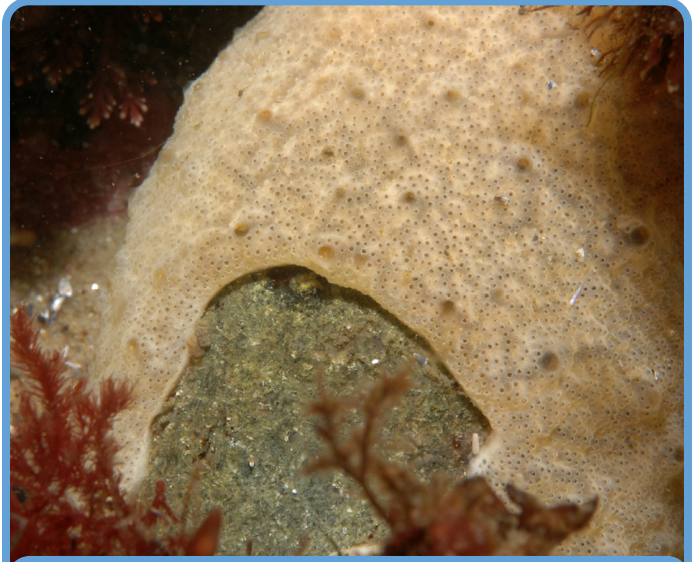
Mitten crab



Rhododendron ponticum



Himalayan balsam



Carpet sea squirt



Mink

Destabilises river banks by creating burrows

Toxic leaves make area uninhabitable for other species

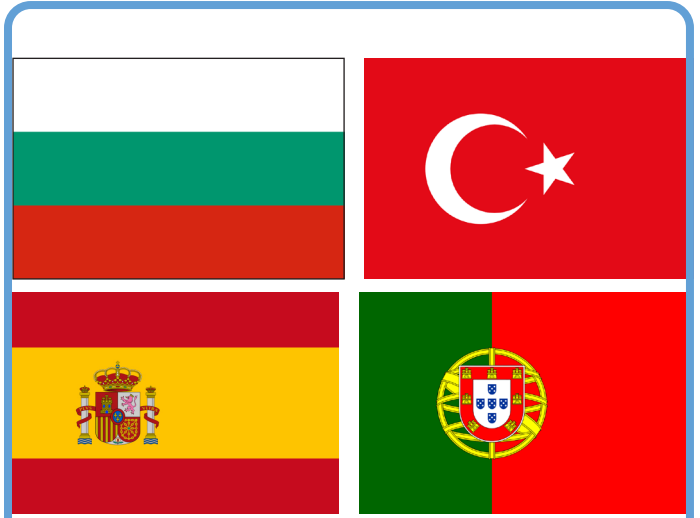
Out-competes native species for space, light and water

Spreads very rapidly, smothering all other species

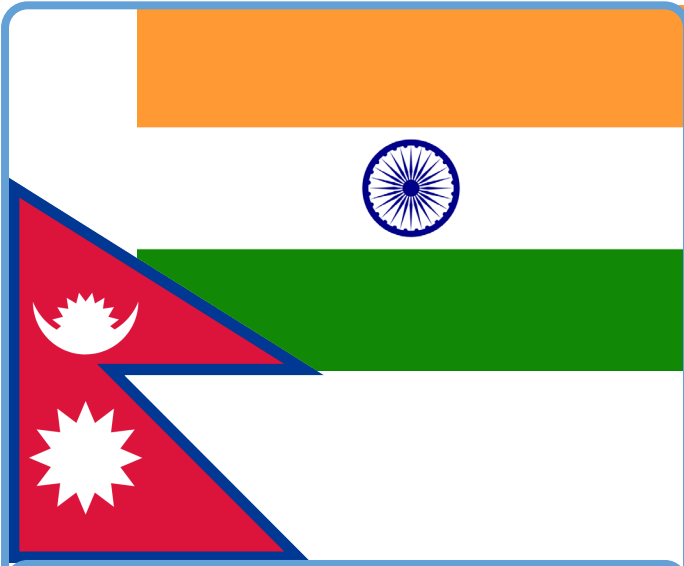
Eats bird eggs, young birds and other small animals



China



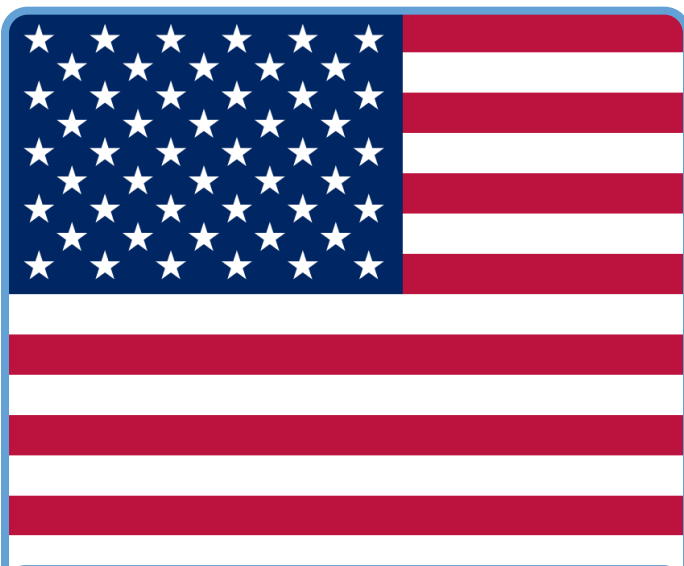
Bulgaria, Turkey, Spain, Portugal



India and Nepal



Not known



USA

# Match it



Game rules: As a group, match the species to the effect it has on the environment and the country it originally came from.

Species: .....

1 Effects: .....

Comes from: .....

Species: .....

2 Effects: .....

Comes from: .....

Species: .....

3 Effects: .....

Comes from: .....

Species: .....

4 Effects: .....

Comes from: .....

Species: .....

5 Effects: .....

Comes from: .....



There are about 2.5 million grey squirrels in the UK, compared to 160,000 native red squirrels.