

Identifying Wildlife

Equipment required (per pair)

- Print out of the 'Guess the Marine Mammal' worksheet, one per pair
- Print out of the 'Dolphin Detectives' worksheet, one per pair
- Print out of the 'Risso's Dolphins Challenge' worksheet, one per pair
- Chalk
- Measuring tape
- Pencils
- Research books and internet enabled devices and internet access

To complete the activity

1. Share the 'Bardsey Marine Mammal Project' video – www.tiramor.cymru/wildliferecording (Resource 2). Why do you think projects like the Bardsey Marine Mammal Project are important? How do scientists use photos and technology, like drones, to study marine mammals?
2. Discuss with learners:
 - Why is it important to correctly identify a species before recording it?
 - What could happen if species are misidentified in a wildlife record?
3. Share a copy of 'Guess the Marine Mammal'. Challenge learners to research online and name the different species of dolphins that have been observed along the Welsh coast. What are the differences between species?
4. Share the 'Bardsey Dolphins' video – www.tiramor.cymru/wildliferecording (Resource 3). Can learners identify individual Risso's Dolphins from their markings? What do learners notice about the size, shape, colour, behaviour and markings? How can these be used to identify individuals?
5. Share the 'Dolphin Detectives' worksheet. Challenge learners to group the 9 Risso's dolphin photos into 3 images of 3 individuals. Guide learners to observe, compare, and group the photos based on markings.
 - What do you notice about the shape of the dorsal fin?
 - Are there any distinctive scars on the dolphin's body?
6. Share the 'Risso's Dolphin Challenge' worksheet. Challenge learners in pairs to identify scientific name, average length and anatomy of a Risso's dolphin. Support learners to access books or online resources.
7. Take the class outside, and support learners to work together to draw a pod of Risso's dolphins to scale, based on real measurements. Once the outline is complete, encourage learners to label the major anatomical features, such as flippers, fluke and dorsal fins.
8. After completing the activities, support learners to reflect on what they have learnt.

ANSWERS: Guess the Marine Mammal

1. Bottlenose dolphin
2. Common dolphin
3. Risso's dolphin
4. Harbour porpoise

ANSWERS: Dolphin Detectives

- | | | |
|------------|------------|------------|
| 1. NIKE | 4. DOT | 7. McQUEEN |
| 2. McQUEEN | 5. NIKE | 8. DOT |
| 3. DOT | 6. McQUEEN | 9. NIKE |

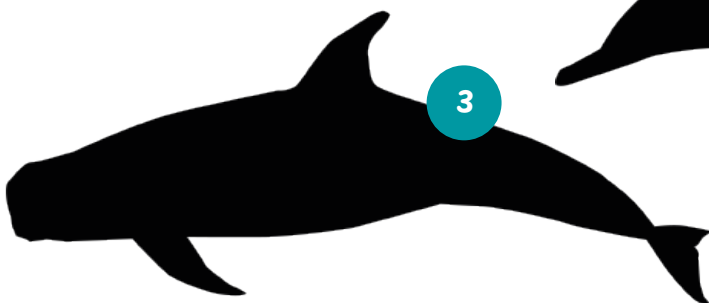
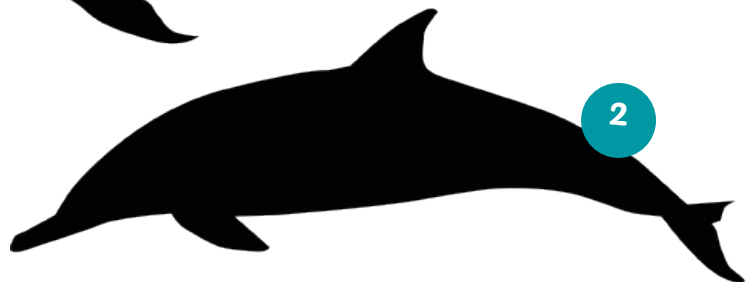
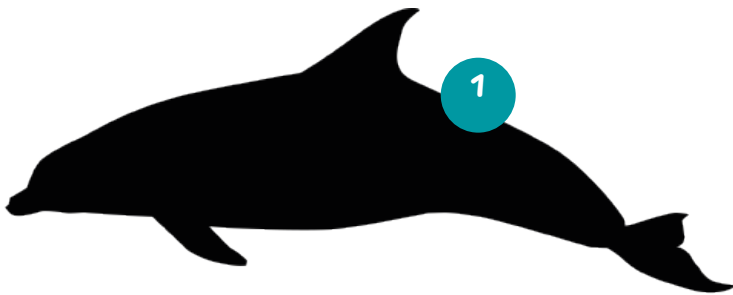


Guess the Marine Mammal

Which species can you see? Try to identify these different marine mammals found around the coast of Wales.

Look at the silhouettes provided and try to identify the different marine mammals.
Pay attention to their shape, size, and features!

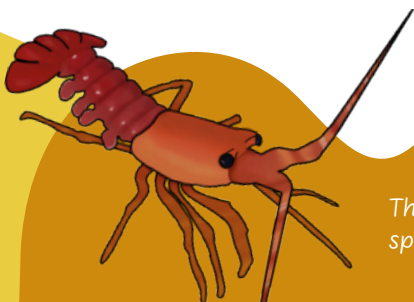
Think about the shape of their dorsal fin, beak or body size.



ADDITIONAL
TASK
Optional

What clues helped you identify each species?
How are porpoises different from dolphins?
Research and explain two key differences.

There are over 40 different
species of dolphins worldwide!

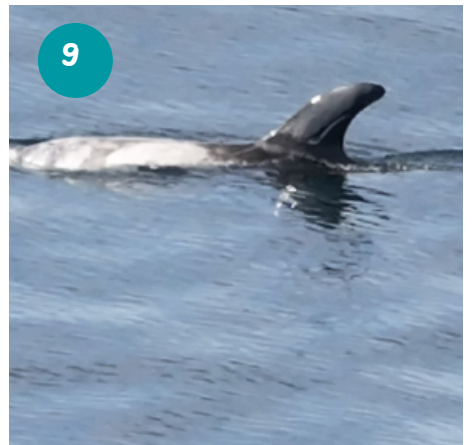
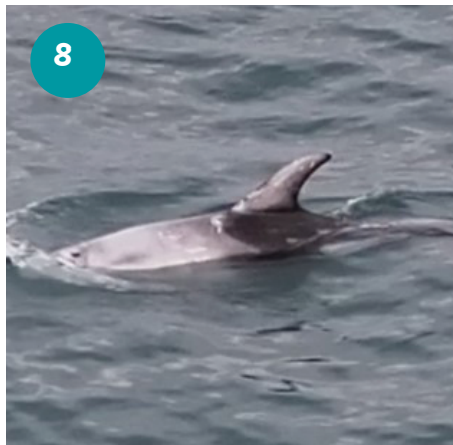
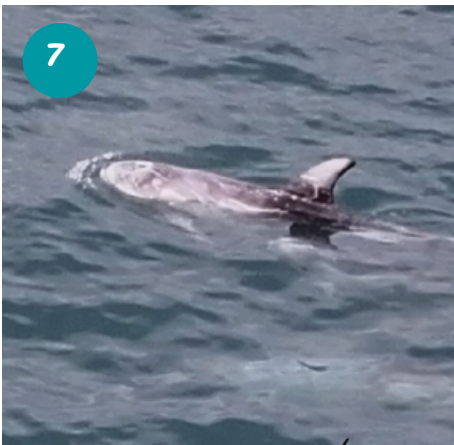
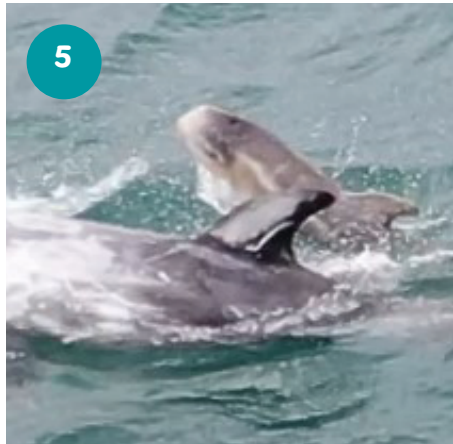
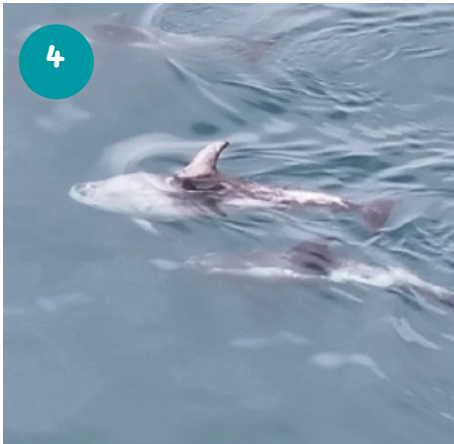
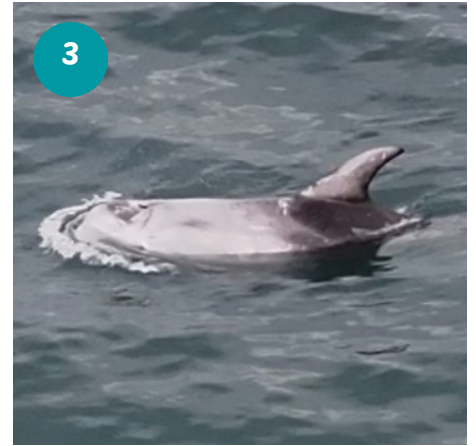
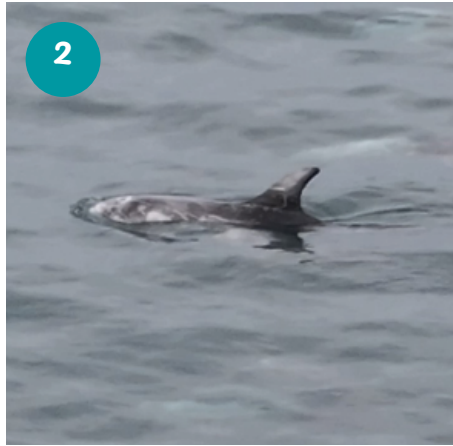




Dolphin Detectives

Here are 9 photos of Risso's dolphins from Enlli.

There are 3 different dolphins, and each dolphin appears in 3 photos. Your job is to find all the photos of each dolphin by looking at their unique markings. Dolphins have different scratches, scars, and patterns on their bodies, just like fingerprints for humans!



Some dolphins can reach speeds of up to 30 miles per hour.

Risso's Dolphins Challenge



You will need

- Chalk

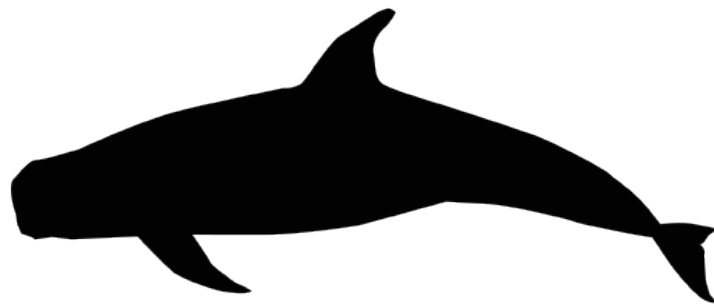
Work in pairs to research and identify the following:

Scientific Name: _____

Average Length: _____

Other Facts: _____

Label the key anatomical features of the Risso's Dolphin:



As a class, go outside to the yard and in pairs, create life size drawings of a Risso's dolphin to scale, using chalk.

Work together as a class to create a pod of unique dolphins.

Follow these steps:

STEP 1

Measure and mark the average length of a Risso's dolphin on the ground and draw the outline.

STEP 2

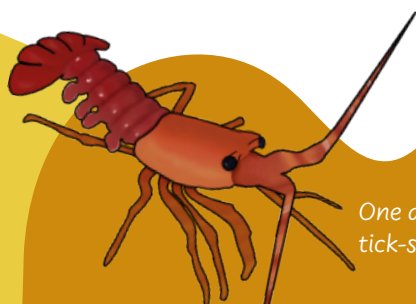
Add key body parts such as fluke, fins, blowhole, eyes and mouth.

STEP 3

Include unique markings, like scars or spots, just like those scientists use to identify individual dolphins.

DISCUSS

Are Risso's dolphins endangered, vulnerable, or thriving?
What conservation efforts are in place to protect the species?



One dolphin, Nike, was named for the tick-shaped scar on its dorsal fin.