

# Sensory Nature Scavenger Hunt

## Equipment required (per group)

- Print out or share a digital copy of 'S\_WR\_1'
- Print out of the 'Sensory Nature Scavenger Hunt' worksheet, one per pair (2 pages)
- Clipboards or sturdy surfaces
- Pencils or crayons
- Magnifying glasses

## To set up

Choose a safe outdoor location (e.g. school grounds, park, garden or beach).

## To complete the activity

1. Introduce the activity by discussing the five senses: sight, touch, hearing, smell, and taste.
2. Share the photo of the boulder cobble reef in S\_WR\_1 with learners. Discuss:
  - What can you see in the photograph?
  - Can you find any shapes or patterns in nature?
  - How do you think the environment might feel if you touched it?
  - What sounds do you imagine you would hear if you were there?
  - What do you think might live or grow in this environment?
3. Hand out the 'Sensory Nature Scavenger Hunt' worksheets, explaining that the goal is to find natural items that match the descriptions.
4. Encourage learners to explore, observe closely, and use their senses (except taste unless specifically allowed). Remind learners not to touch unknown plants, insects or fungi. Encourage learners to observe and appreciate living things (e.g. minibeasts, plants and flowers) in their natural environment without picking or disturbing them, so others can enjoy them too.
5. Support learners to draw or describe what they find in the corresponding boxes.
6. Regroup to share discoveries, promoting descriptive language and discussion.

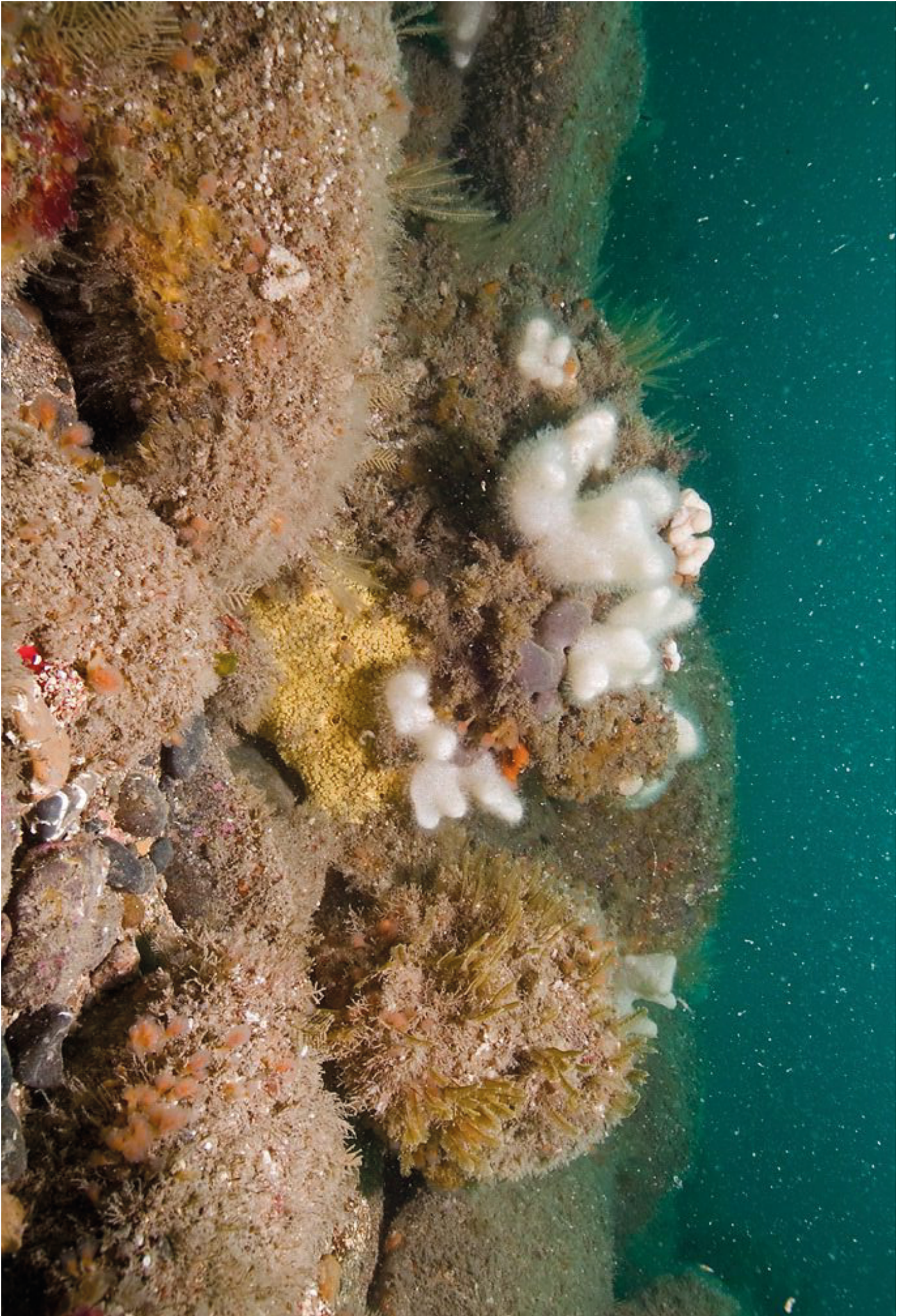
ADDITIONAL  
TASK  
Optional

Encourage learners to create their own 'Scavenger Hunt' cards, with unique sensory prompts for their classmates to complete.

### Safety

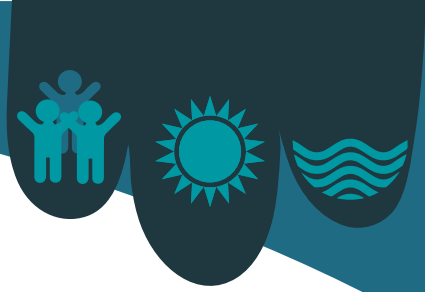
Supervise learners closely to ensure safe exploration



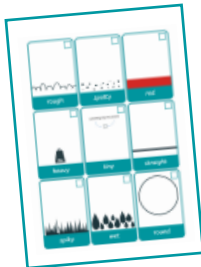
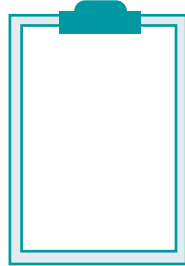
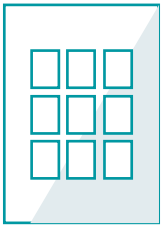




# Sensory Nature Scavenger Hunt



## What you will need



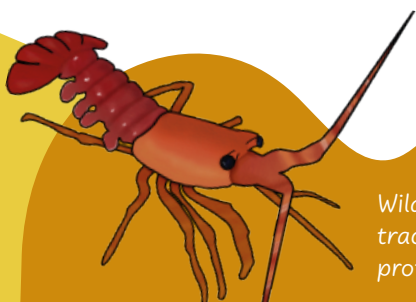
Use your senses to find natural items that match the descriptions.

**Draw or write what you find!**

ADDITIONAL  
**TASK**  
Optional

Create your own 'Scavenger Hunt' cards

<div><div></div><div></div></div>	<div><div></div><div></div></div>	<div><div></div><div></div></div>
<div></div>	<div></div>	<div></div>



Wildlife recordings help scientists track species, populations and protect habitats.

