

Hidden Haiku



Use the lines below to write two haikus describing the seashore plants and animals we have been learning about. Remember not to use the creatures' name, so that other people can work out which animal your poem is describing.

Haiku rules: There are three lines to each poem. Five syllables in the first line, seven syllables in the second and five in the third.

Big sharp claws clicking
Wide orange shell protects me
Walk sideways quickly

**It's describing an edible crab, did you guess it right?*

1

.....

.....

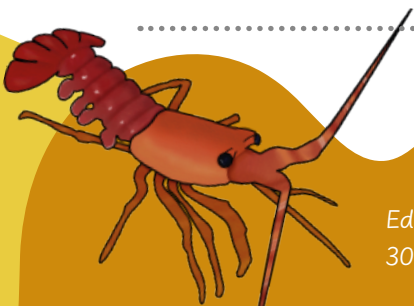
.....

2

.....

.....

.....



Edible crabs can grow up to
30cm across!