



Invertebrate Investigation

Plan your own Invertebrates Investigation below:

1. Which invertebrates would you like to spot?

2. Where will you look?

Tick one or more.

☐

Trees

☐

Bushes

☐

Grass

☐

Rocks

☐

Sand

☐

Water

☐

Other

3. When do you think is the best time to look?

Tick the best time.

☐

Morning

☐

Afternoon

☐

Evening

☐

Night

4. How will you spot this animal?

Draw or describe your method.

5. List the tools or materials you will need for your investigation.

6. Record Your Observations.

What did you see?

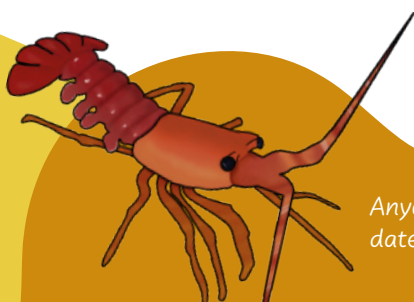
Describe or draw your findings.

7. Did you find the animal you were looking for?

If yes, describe what it was doing. If no, what do you think happened?

DISCUSS

What did you enjoy most about your investigation?
What would you do differently next time?



Anyone can record wildlife - just note the date, location, species and habitat.